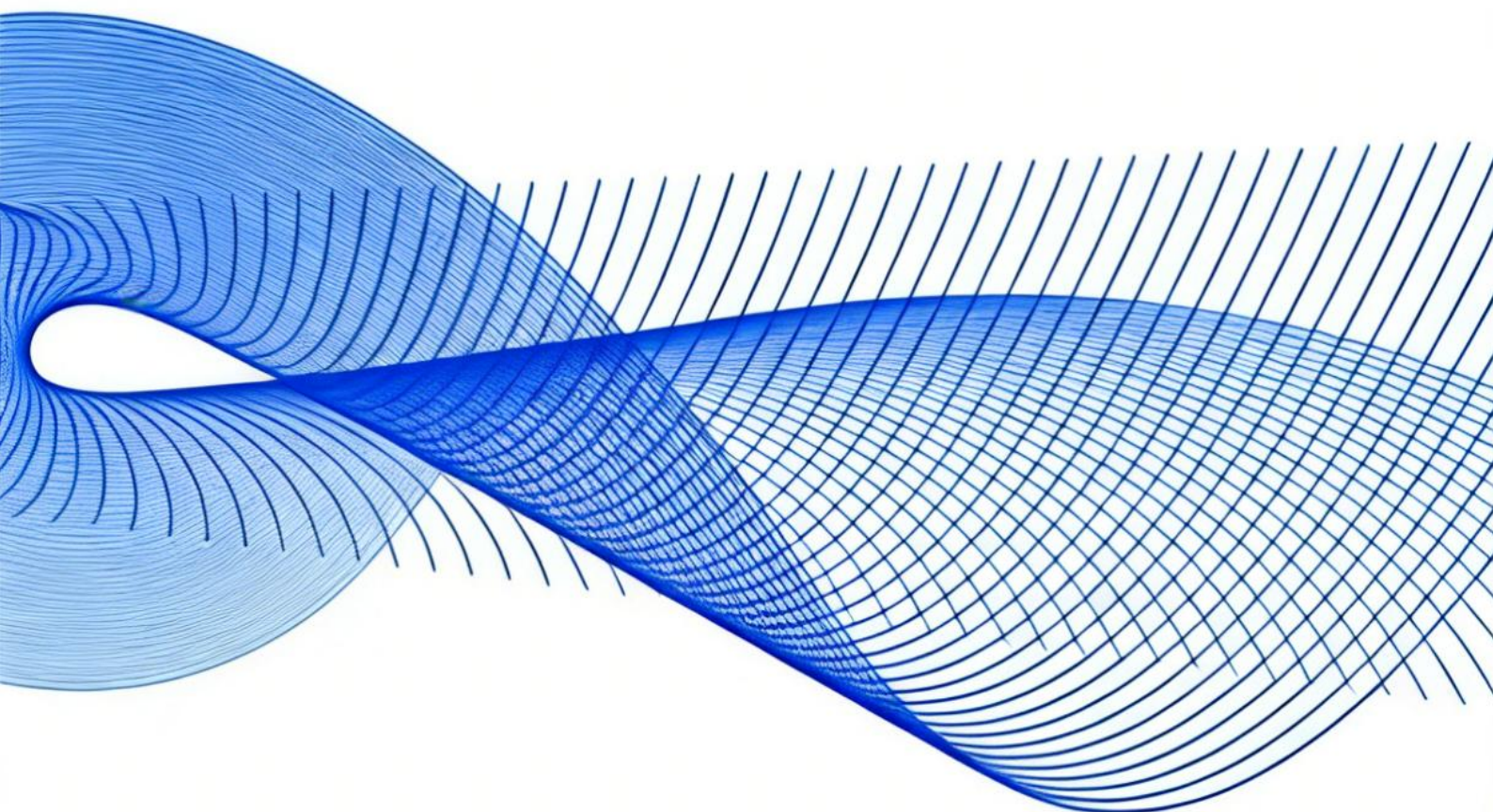


Hangzhou GT Rail Traffic Equipment Co., Ltd

IVH Drive Global Catalogue



Professional Industry-Trade Integration Supplier

About Us

IVH DRIVE was officially established on 15th June 2011 in Hangzhou. Currently, we mainly sell reducers, motors, blowers, and gear pumps in the international market, and even provide customers with a complete set of equipment transmission solutions. We are always focused on quality control, process, materials, design, and other aspects. We are steadily advancing in the fiercely competitive market, striving to provide customers with high-quality products and thoughtful services.



2011

SINCE

25+

EXPORT COUNTRIES

40+

PRODUCT COVERAGE

8

FACTORIES DISTRIBUTION



Product Content

1.Worm Reducer Series.....1

NMRV Aluminium Worm Gear Reducer
Double Worm Gear Reducer
VF Aluminium Worm Gear Reducer
WP Worm Gear Reducer
Stainless Steel NMRV Worm Reducer
Stainless Steel VF Worm Gear Reducer
Automatic Car Wash Worm Gear reducer
Snow Sweeper Worm Gear reducer

HK Series Worm Gear Screw Jack
SWL Series Worm Gear Screw Jack
UDL Continuously Variable Transmission
MB Continuously Variable Transmission
JWB Continuously Variable Transmission
Hyperbolic Gear Reducer
High Precision Series Planetary Gearbox
Standard Series Planetary Gearbox
Right Angle Commutator Series
Hollow Rotating Platform

2.Gear Reducer Series.....3

K Series Helical Gear Reducer
F Series Helical Gear Reducer
S Series Helical Gear Reducer
R Series Helical Gear Reducer
Cycloid Gear Reducer
Hardened Gear Reducer
Planetary Starrer Gear Reducer

5.Reduction Motor Series.....9

Parallel Axis Series Reduction Motor
L-series Reduction Motor
Direct Axis Series Reduction Motor
CH/CV Reduction Motor

3.Motor Series.....5

Three-phase Asynchronous Motor
Single-phase Asynchronous Motor
Break Motor
Cast Iron Motor

6.Blower and Fan Series.....10

Single Stage Blower
Double Stage Blower
Centrifugal Fan
Low Noise Centrifugal Blower

4.Precision Transmission Series..6

T Series Spiral Bevel Gear Steering Device
HD Series Spiral Bevel Gear Unit

7.Pump Series.....11

High Viscosity Heavy Oil Rotary Pump
GNB Type Ring Type High Viscosity Pump
3RP Sefies Rotary Lobe Pump
SHGB Type of Rotating CAM Follower



NMRV Aluminium Worm Gear Reducer

NMRV SERIES WORM GEAR REDUCER

Size: 030-040-050-063-075-090-110-130-150

Power: 0.06 to 11kw

Reduction ratios: between 7.5 and 100

Cases: up to 90 in die-cast aluminum alloy, Cast Iron

Application: Packaging Machinery, Plastic Machinery, Wooden Machinery, Ceramic Industries, Pharma Industries, Construction Machinery etc...



Double Worm Gear Reducer

NMRV+NMRV WORM GEAR REDUCER

Centre Distance: up to 150mm

Ratio: 100:1-5000:1

Torque: up to 250Kgm

Input Power: 0.16HP-7.5HP

Mounting: Universal Mounting

Output shaft: Hollow 14mm-50mm Plug in solid shaft

Application: Packaging, Mixing, Conveyor, Cranes.etc.

Industries: Material handling, Pharma, Packaging, Food processing, Ceramic etc.



VF Aluminium Worm Gear Reducer

VF SERIES WORM GEAR REDUCER

Size: 030-040-050-063-075-090-110-130-150

Power: 0.06 to 15kw

Reduction ratios: between 7 and 100

Application: Food and beverage and beer industries, Packaging and printing industries, Logistics and automated warehousing, Woodworking and furniture machinery, etc...



WP Worm Gear Reducer

Unit Size: WPA50 to WPA175

Range: Power Range up to 250kw

Ratio: 1-10 to 1-60

Type: Under Driven/Oriven/Vertical Units in Single & Double Reduction.

Application: Conveyor, Alleviator, Ball Mill, Agitators, Cranes, Paper Mill, Ceramic, Lift Gearbox

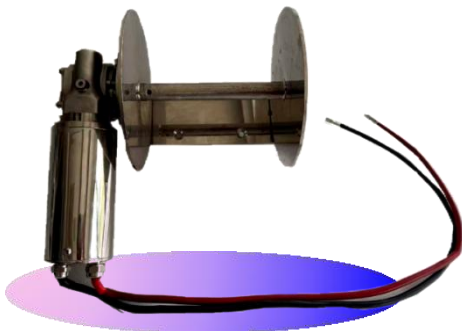
Industries: Ceramic, Paper Mill, etc.



Stainless Steel NMRV Worm Reducer

Model: RV40/50/63/75/90, GMSS30/40/50/63/75/90

Application: Food & Beverage Processing Machinery, Water Treatment, Aquaculture & Environmental Equipment, Pharmaceutical & Chemical Light Industry Machinery, Cold Chain, Daily Chemical & Coastal Automatic Equipment, etc.



Stainless Steel VF Worm Gear Reducer

Model: SSVF/40/50/63

Application: Food, Beverage & Slaughter Processing Machinery, Pharmaceutical, Daily Chemical & Light Chemical Machinery, Water Treatment, Aquaculture & Environmental Equipment, Cold Chain, Marine & Outdoor Automatic Equipment, etc.



Automatic Car Wash Worm Gear reducer

Model: CW050

Application: Automatic Car Wash & Petrol Station Equipment, Food, Beverage & Packaging Machinery, Water Treatment, Environmental & Chemical Mixing Equipment, Logistics Conveying, Warehousing & Light Lifting Equipment, etc.



Snow Sweeper Worm Gear reducer

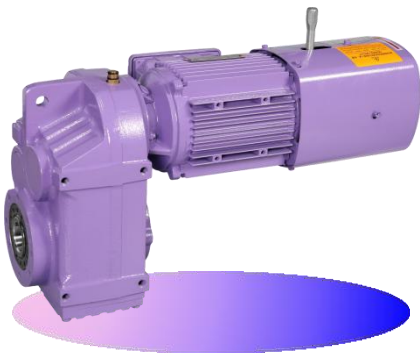
Model: SXVF050

Application: Municipal Sanitation & Road Maintenance, Airport, Railway Station & Large Yard Maintenance, Gardens, Farms & Ski Resort Equipment, Military, Polar & Special Construction Machinery, etc.



R Series Helical Gear Reducer

Unit Size: R37-R167
Power Range: 0.12-160kw
Output Speed: 0.16-1028RPM
Output Torque: up to 23000N.m
Mounting Type: Foot Mounting
Reduction Stage: 2 stage & 3 stage
Application: Packaging, Mixing, Conveyor, Cranes. etc.



F Series Helical Gear Reducer

Unit Size: F37-F157
Input Power: 0.12-200kw
Output Torque: up to 22500N.m
Gear Ratio: up to 22323:1
Application: Packaging, Mixing, Conveyor, Cranes. etc.



K Series Helical Gear Reducer

Unit Size: K37-K187
Power Range: 0.12-200kw
Output Speed: 0.16-1028RPM
Output Torque: up to 23000N.m
Mounting Type: Flange Mounting
Reduction Stage: 2 stage & 3 stage
Application: Packaging, Mixing, Conveyor, Cranes. etc.



S Series Helical Gear Reducer

Unit Size: S37-S97
Power Range: 0.12-22kw
Output Speed: 0.12-177RPM
Output Torque: up to 4900N.m
Application: Packaging, Mixing, Conveyor, Cranes. etc.



Cycloid Gear Reducer

Range: 0.50 to 100 hp
Ratio: 9:1, 11:1, 17:1, 23:1, 29:1, 35:1, 43:1, 59:1, 71:1, 87:1
Type: BLD Series/XLD Series
 Mounting Type:Foot Mounting
 Application:Line /Kiln/Convair &AllCeramic
 IndustrialIndustries:Material Handling, Pharma, Packaging, Food Processing, Ceramic, etc.



Cycloid Gear Reducer

Range: 0.50 to 100 hp
Ratio: 9:1, 11:1, 17:1, 23:1, 29:1, 35:1, 43:1, 59:1, 71:1, 87:1
Type: BLD Series/XLD Series
 Mounting Type: Flange Mounting
 Application:Line /Kiln/Convair &AllCeramic
 IndustrialIndustries:Material Handling, Pharma, Packaging, Food Processing, Ceramic, etc.



Hardened Gear Reducer

Unit Size: ZDY Series/DBYSeries
 Power Range: 1.1—6000kw
 Transmission Ratio Range: 1.25—500
Output Torque: top to 520Kn.m
Application: Packaging, Mixing, Conveyor, Cranes, etc.



Planetary Starrer Gear Reducer

Range: From 0.75 kw to 355 kw
Ratio: 3:1 to 5000:1
Type: Planetary Gear/Vertical Gear
Industries: Material Handling, Pharma, Packaging Food Processing, Ceramic, etc.



Three-phase Asynchronous Motor

Aluminium Body

Range: 0.12 KW to 315 KW

Type: YE1/YE2/YE3/YE4/YE5

Application: Water treatment, fan & pump, Automation & logistics conveying, Building materials, mining & heavy industry, Textile, food and light industry, etc.



Single-phase Asynchronous Motor

Aluminium Body

Range: 0.12 KW to 7.5 KW

Pole: 2 poles, 4 poles

Speed: 1400 to 2800 RPM

Application: HVAC & household appliances, Light industry & small machinery, Water supply, gardening & agriculture, Commercial automatic & office equipment, etc.



Break Motor

Aluminium Body

Range: 0.18 kw to 75 kw

Type: Y2EJ

Application: Power Intensive Industries Including chemical Industries Ceramic Industries, Paper Industries, etc.

Industries: All Process Industries



Cast Iron Motor

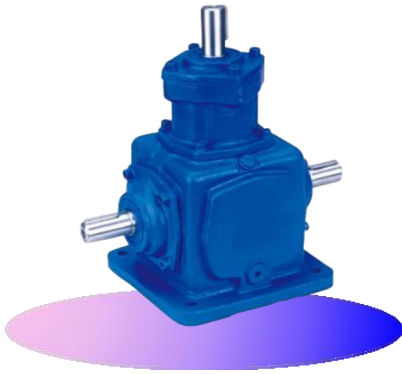
Cast Iron Body

Output: 2HP to 6HP

Frame Size: 63 to 280M

Type: AEHY, AEHL, AEUL

Application: Water treatment & pumps, Fans, HVAC & environmental protection, Mining, metallurgy & heavy machinery,



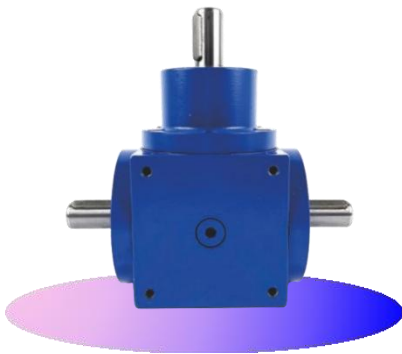
T Series Spiral Bevel Gear Steering Device

Model: T2,T4,T6,T7,T8,T10,T12,T16,T20,T25

Ratio: 1:1 to 5:1

Type: -I-U, -I-D, -D-L, -U-LR

Application: Agricultural Machinery, Construction & Mining Equipment, Food, Packaging & Printing Machinery, Woodworking & Industrial Automation, etc.



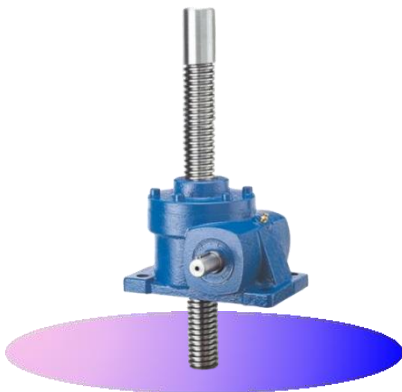
HD Series Spiral Bevel Gear Unit

Model: HD09,HD11,HD14,HD17,HD21,HD24,HD28

Ratio: 1:1 to 5:1

Type: HD, HDA, HDF, HDAF

Application: Industrial Automation & Logistics Conveying, Water Treatment, Environmental Protection & Fan/Pump, Food, Packaging, Pharmaceutical & Light Industry Machinery, Woodworking, Building Materials & Plastic Machinery, etc.



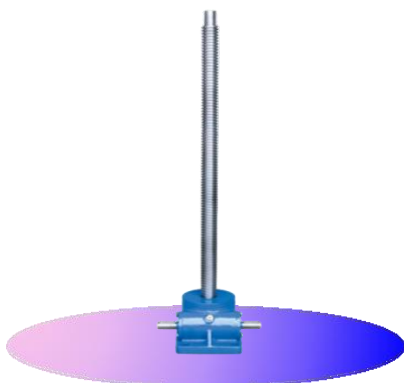
HK Series Worm Gear Screw Jack

Model: HK35, HK40, HK50, HK60, HK60B, HK70, HK100, HK120, HK130, HK150

Ratio: 1/5 to 1/36

Type: HK-R, HK-S, HK-T, HK-H

Application: Industrial Automation & Assembly Line Lifting Equipment, Water Treatment & Environmental Protection Equipment, Metallurgy, Building Materials & Heavy Industry Machinery, Food, Packaging & Pharmaceutical Light Machinery, etc.



SWL Series Worm Gear Screw Jack

Model: SWL0.5T to 100T

Max lifting force: 5KN to 1000KN

Power: 0.12kw to 15kw

Application: Metallurgy, Mining & Building Materials Heavy Machinery, Water Treatment, Environmental & Water Conservancy Equipment, Machine Tool, Mold Tooling & Industrial Press Equipment, Construction, Bridge & Large Lifting Storage Equipment, etc.



UDL Continuously Variable Transmission

Unit Size: UDL 0.18-1.1/UD1.1-7.5

Range: From 0.18kw to 7.5kw

Ratio: 1:1.4 to 7/O/P RPM=200-1000 RPM

Sizes: Form 14mm to 28mm output shaft diameter

Application: Packaging, Mixing, Conveyor, Cranes, etc.

Industries: Material handling, Pharma, Packaging, Food processing, Ceramic, etc.



MB Continuously Variable Transmission

Model: MB02,MB04,MB07,MB15,MB22,MB40,MB75,MB150,MB220

Range: From 0.12kw to 7.5kw

Ratio: 1/1.45 to 1/7.25

Application: Food Processing & Packaging Industry, Ceramic & Building Materials Industry, Pharmaceutical & Fine Chemicals Industry, Rubber & Plastics Processing Industry, etc.



JWB Continuously Variable Transmission

Unit Size: JWB

Range: From 0.18kw to 7.5kw

Ratio: 5:1

Output Speed Range: 200 – 1000 R/MIN

Application: Pharmaceutical & Fine Chemical Industry, Rubber & Plastics Processing Industry, Food & Beverage Deep Processing Industry, Printing & Packaging Precision Processing Industry, etc.



Hyperbolic Gear Reducer

NMRV+KRV HYPERBOLIC GEAR REDUCER

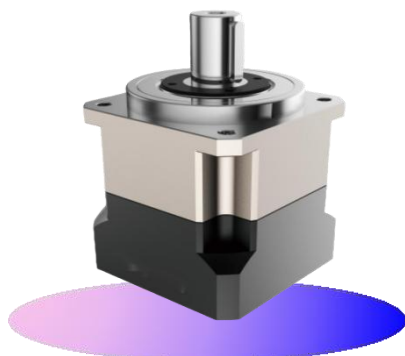
Size: 050-063-075-090-110

Power: 0.25 to 7.5kw

Reduction ratios: between 5 and 100

Application: Food packaging and beverages, Textile printing and dyeing, Logistics warehousing and automation, Building materials and cement machinery, Environmental protection and water treatment, Light industry and printing and papermaking, etc....

High Precision Series Planetary Gearbox



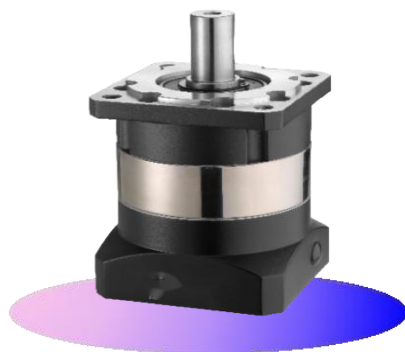
Model: AB, PX, PA, PAY, PAL, PW, PG, PXR, PAR, PALR, PGR

Specification range: 27 to 220

Ratio range: 3-100

Application: Industrial Automation & Custom Intelligent Equipment, Robotics, Manipulator & Intelligent Logistics, New Energy, PV & 3C Electronic Equipment, Machine Tool, Laser, Printing & Packaging Precision Machinery, etc.

Standard Series Planetary Gearbox



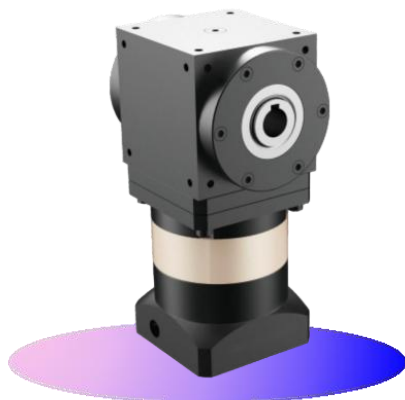
Model: PRF, PRL, PFN, PRN, PVFN, PVLN, PGVF

Specification range: 40 to 160

Ratio range: 3-100

Application: Industrial Automation & Custom Intelligent Equipment, Robotics, Manipulator & Intelligent Logistics, New Energy, PV & 3C Electronic Equipment, Machine Tool, Laser, Printing & Packaging Precision Machinery, etc.

Right Angle Commutator Series



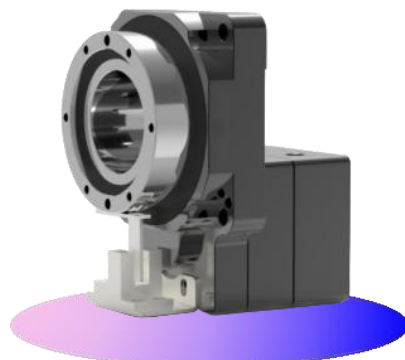
Model: AT-FH, AT-FL

Specification range: 75 to 170

Ratio range: 1-100

Application: Industrial Automation & Custom Intelligent Equipment, Robotics, Manipulator & Intelligent Logistics, New Energy, PV & 3C Electronic Equipment, Machine Tool, Laser, Printing & Packaging Precision Machinery, etc.

Hollow Rotating Platform



Model: PTN Series

Ratio range: 1-50

Application: Industrial Automation & Custom Intelligent Equipment, Robotics, Manipulator & Intelligent Logistics, New Energy, PV & 3C Electronic Equipment, Machine Tool, Laser, Printing & Packaging Precision Machinery, etc.



Parallel Axis Series Reduction Motor

Output Power: 6w to 750w

Type: Induction, Reversible

Application: Logistics Automation & Conveying Equipment, Food, Packaging & Pharmaceutical Light Machinery, Water Treatment, Environmental Protection & Fan/Pump, Woodworking, Plastic, Printing & Industrial Automation, etc.



L-series Reduction Motor

Output Power: 6w to 370w

Type: Induction, Reversible

Application: Logistics Automation & Conveying Equipment, Food, Packaging & Pharmaceutical Light Machinery, Water Treatment, Environmental Protection & Fan/Pump, Woodworking, Plastic, Printing & Industrial Automation, etc.



Direct Axis Series Reduction Motor

Output Power: 25w to 370w

Type: Induction, Reversible

Application: Logistics Automation & Conveying Equipment, Food, Packaging & Pharmaceutical Light Machinery, Water Treatment, Environmental Protection & Fan/Pump, Woodworking, Plastic, Printing & Industrial Automation, etc.



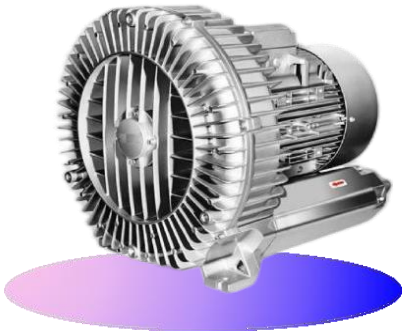
CH/CV Reduction Motor

Output Power: 100w to 3700w

Type: CH, CV

Ratio: 1:3 to 1:1800

Application: Food, Packaging & Pharmaceutical Machinery, Logistics Automation & Conveying Equipment, Office Automation & Commercial Equipment, Woodworking, Printing & Custom Automation Machinery, etc.



Single Stage Blower

Model: HG010 to HG930

Rated Power: 0.09kw to 18.5kw

Application: Industrial Air Drying, Air Knife & Dust Removal, Water Treatment, Aeration & Aquaculture Oxygenation, Food, Packaging & Light Industry Vacuum Conveying, Woodworking, Automation & Sorting Adsorption Equipment, etc.



Double Stage Blower

Model: 2HG220 to 2HG820

Rated Power: 0.7kw to 17.3kw

Application: Powder & Granule Pneumatic Conveying, Deep Water Aeration & Environmental Water Treatment, Strong Vacuum Adsorption & Automatic Handling Equipment, Industrial Dust Removal, Hot Air Circulation & High-pressure Drying, etc.

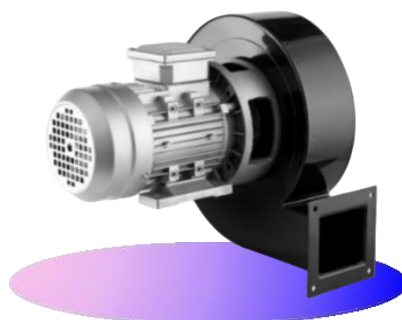


Centrifugal Fan

Model: YN-TB-100 to YN-TB-180

Rated Power: 0.75kw to 15kw

Application: Dust Removal & Environmental Exhaust Treatment, HVAC, Air Conditioning & Industrial Drying Systems, Woodworking, Building Materials & Light Industry Conveying, Boiler, Metallurgy &



Low Noise Centrifugal Blower

Model: DF-1.3 to DF-9

Rated Power: 120w to 2.2kw

Application: HVAC, Air Purification & Clean Room Ventilation, Industrial Drying, Oven & Hot Air Circulation Equipment, Printing, Packaging & Electronic Light Industry Automation, Kitchen Ventilation, Oil Fume & Waste Gas Treatment, etc.

HIGH VISCOSITY HEAVY OIL ROTARY PUMP
高粘度稠油转子泵



●The high viscosity heavy oil rotary pump is mainly suitable for transporting media with high viscosity; In terms of oil pump selection, it is necessary to refer to the properties of the medium; The high viscosity heavy oil rotary pump produced by Shenghui Pump Industry adds insulation devices on the basis of the high viscosity rotary pump, which has the effect of insulating the pump liquid and preventing crystallization, making it an ideal high viscosity liquid delivery pump.

●Main components: Pump cover, small shaft, small shaft sleeve, small gear, internal gear, pump body, main shaft, main shaft sleeve, packing seal or mechanical seal, packing gland or sealing gland, pump seat, front bearing cover, bearing, rear bearing cover.

GNB TYPE RING TYPE HIGH VISCOSITY PUMP
GNB 型内环式高粘度转子泵



●The GNB type inner ring high viscosity rotor pump belongs to the positive displacement internal gear pump. The pump adopts a combination of positive displacement rotor and idler gear. The positive displacement rotor and idler gear combination of the pump has a good buffering effect during operation, which can achieve low shear and pulse free liquid delivery. The tooth shape of the internal gear is crown tooth shape, and the "inlet volume" of the internal gear pump chamber is surrounded by the crescent shaped wall surface of the pump body and the tooth surfaces of the two liquid sealing surfaces. During the continuous rotation of the gear, liquid is generated to achieve the purpose of transportation.

3RP SEFIES ROTARY LOBE PUMP
3RP 型凸轮转子泵



●The 3RP cam rotor pump belongs to the rotary displacement pump, with high efficiency and long service life. It is suitable for conveying suspended liquids containing solid particles and media with high requirements for corrosiveness and hygiene at temperatures ranging from $-30\text{ }^{\circ}\text{C}$ to $+180\text{ }^{\circ}\text{C}$ and viscosities ranging from 30 to $1.0 \times 10^5\text{cSt}$. The internal parts of the pump body that come into contact with the media are made of stainless steel materials, and the pump speed can be changed according to the different physical characteristics of the media.

SHGB TYPE OF ROTATING CAM FOLLOWER
SHGB 旋转凸轮转子泵



●The SHGB rotary cam rotor pump adopts a modular floating mechanical seal instead of the existing spring thrust mechanical seal structure.

●The SHGB rotary cam rotor pump relies on two synchronously rotating rotors that produce suction (vacuum degree) at the inlet during the rotation process, thereby sucking in the material to be conveyed. The two rotors divide the rotor chamber into several small spaces and operate in the order of I \rightarrow II \rightarrow III \rightarrow IV, and the medium is transported to the discharge port. In this cycle, the medium (material) is transported out.



Hangzhou GT Rail Traffic Equipment Co., Ltd

Address: No.21 Jinfeng 3rd Road, Yipeng Street, Qiantang District, Hangzhou City, Zhejiang Province, China.

Mob/WhatsApp/Wechat: +86 187 5820 4915

Email: william@ivhdrive.com

Web: www.ivhdrive.com

Professional Industry-Trade Integration.

Equipment And Integrated Solution Provider.

Integrity, Focus, Innovation.

